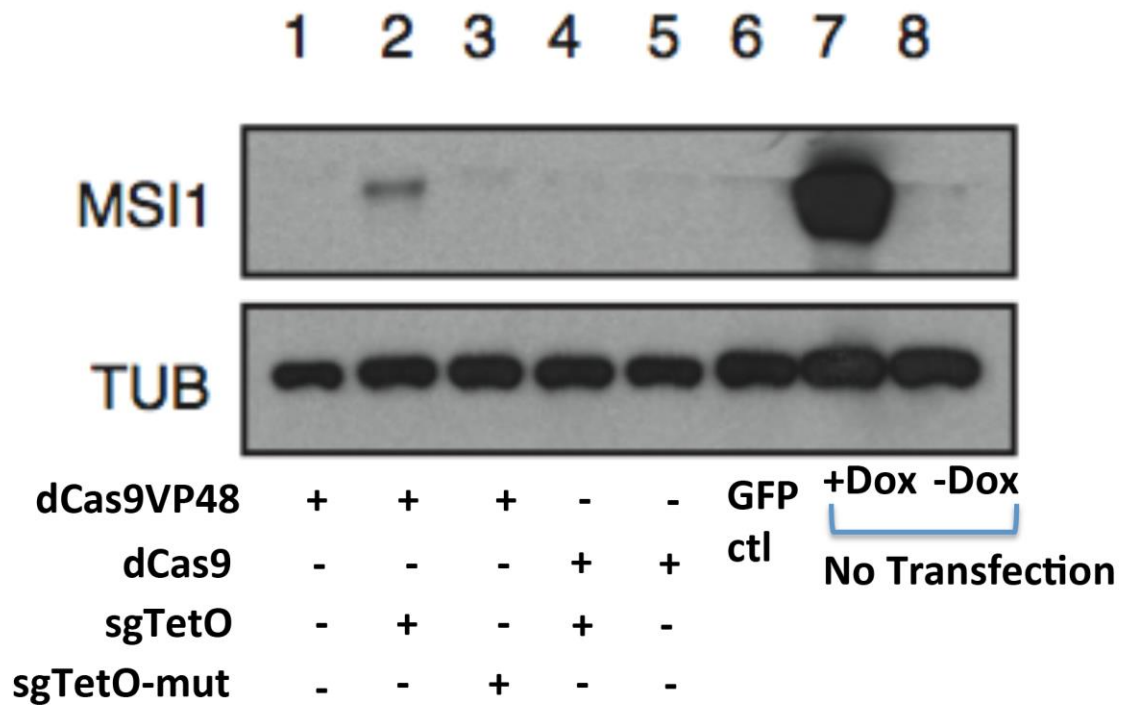


KH2MSI1 mESC line
 CAGGS::rtTA-M2 at *Rosa26* Locus
 TetO::Msi1 at *Col1A1* Locus (flip-in)



Supplementary information, Figure S3 CRISPR-on activated a single-copy transgene in ESCs.

Cells were transfected with the indicated plasmids into a Tet-inducible MSI1 over-expression mouse embryonic stem cell (mESC) line and were analyzed by western blot for MSI1 expression 48 hr later.