

PracticalNeurology

COMPLEMENTING THE JOURNAL OF NEUROLOGY, NEUROSURGERY AND PSYCHIATRY

67 Editor's choice

Charles Warlow

Editorial

68 Reflections on management

John Greene

Reviews

71 "Can I drive, doctor?" LEAN thinking may help us answer the question

R H Thomas, T A T Hughes

80 Not all morning headaches are due to brain tumours

A J Larner

What to do

85 When a patient with epilepsy complains about poor memory

Adam Zeman

A difficult case

90 A difficult case solved at autopsy: memory loss, behavioural change and seizures

U G Schulz, W Stewart, S R Thomas

Neurological history

96 James Paget's median nerve compression (Putnam's acroparaesthesia)

J M S Pearce

Image of the moment

100 Fahr's disease

Anant M Shenoy, Darren Volpe,
Erik R Ensrud

Neurological rarity

102 The paroxysmal dyskinesias

Anne-Fleur van Rootselaar,
Steven Schade van Westrum,
Demetrios N Velis, Marina
A J Tijssen

Test yourself

110 Recurrent choking in Parkinson's disease

Neil Archibald, Peter Newman

Neurological letter from ...

114 Northern Ireland

Victor Patterson

Letter

117 Clinical questions need perceptive answers

M Swash

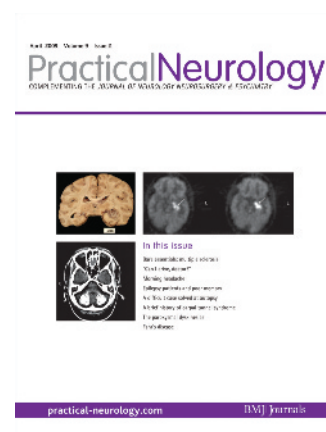
Neurology in practice

118 Multiple sclerosis

Alasdair Coles

Carphology

127 by Rajendra



April 2009

Volume 9

Issue 2

Cover pictures from articles on
pages 85, 90 and 100