

RESEARCH BRIEF

**Huabin Luo, PhD¹; Ronny A. Bell, PhD¹; Doyle M. Cummings, PharmD¹;
Zhuo (Adam) Chen, PhD^{2,3}**

PEER REVIEWED

R

R



The opinions expressed by authors contributing to this journal do not necessarily reflect the opinions of the U.S. Department of Health and Human Services, the Public Health Service, the Centers for Disease Control and Prevention, or the authors' affiliated institutions.

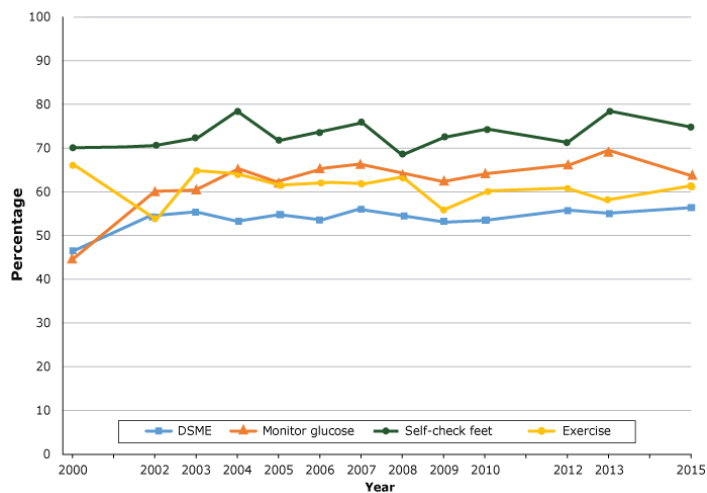


Figure 1. Proportion of adults with diabetes that participated in self-care activities in North Carolina, Behavioral Risk Factor Surveillance System, 2000–2015. Abbreviation: DSME, diabetes self-management education.

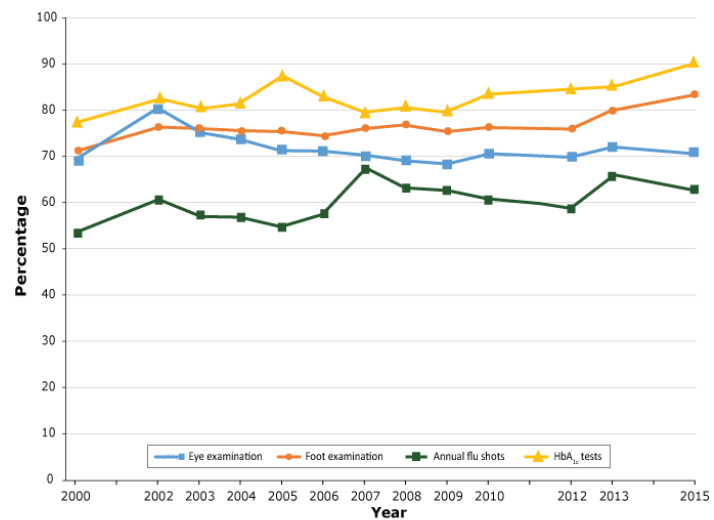


Figure 2. Proportion of adults with diabetes that received clinical care services in North Carolina, Behavioral Risk Factor Surveillance System, 2000–2015.

R

R

R

