

Supporting Information

A dual-signal amplification platform for sensitive fluorescence biosensing of leukemia-derived exosomes

Lin Huang^a, Dian-Bing Wang^b, Netrapal Singh^{b,c}, Fang Yang^a, Ning Gu^{a,*}, Xian-En Zhang^{b,*}

^aSchool of Biological Science and Medical Engineering, Southeast University, Nanjing 210096, PR China

^bNational Laboratory of Biomacromolecules, CAS center for Excellence in Biomacromolecules, Institute of Biophysics, Chinese Academy of Sciences, Beijing 100101, China

^cInstitute for Synthetic Biology Research, Shenzhen Institutes of Advanced Technology, Chinese Academy of Sciences, Shenzhen 518055, P.R. China

*Corresponding authors

E-mail addresses: zhangxe@ibp.ac.cn (Xian-En Zhang), guning@seu.edu.cn (Ning Gu)

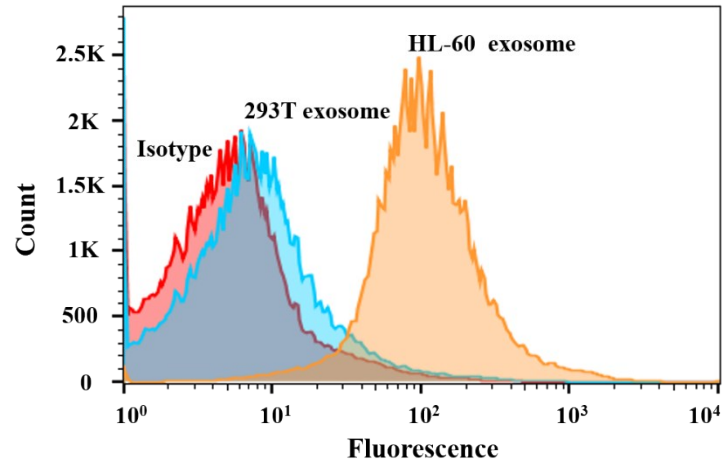


Fig. S1 Flow cytometric analysis of different cell-derived exosomes with nucleolin marker.

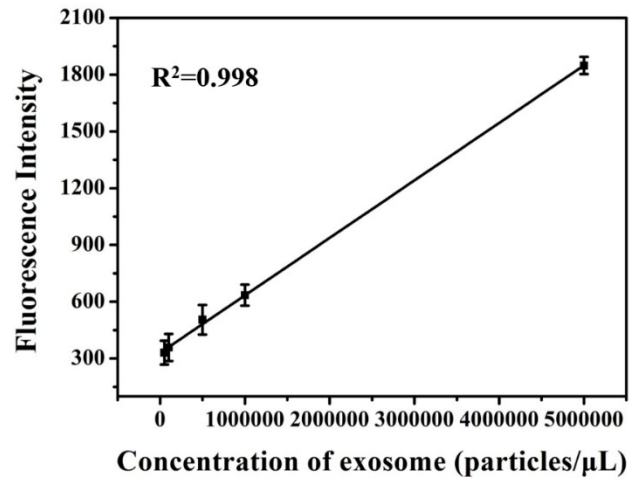


Fig. S2 Standard curve of the fluorescence intensity (without nicking endonuclease-based amplification) versus the concentration of exosomes.