

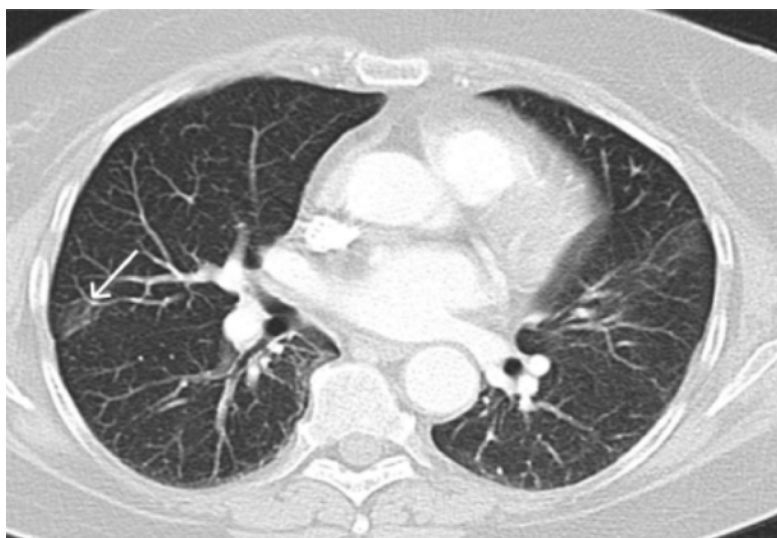
# *Klebsiella pneumoniae*–Induced Liver Abscesses, Germany

## Technical Appendix

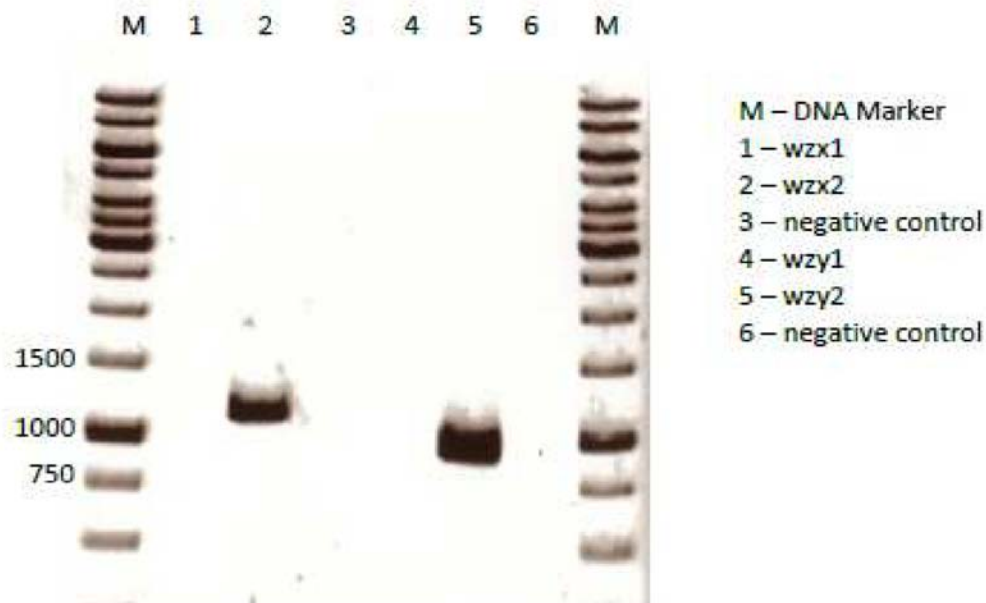
A



B



C



Technical Appendix legend. A and B) Posttreatment computed tomography images of liver abscess (arrow) (A) and lung lesion (B) in 71-year-old white woman with type-2 diabetes (patient 2). C) PCR of the *Klebsiella pneumoniae* K2 strain isolated from a patient with liver abscess (patient 2).